



Dual Codec Fixed IR Network Camera

Quick Installation Guide

This guide describes the basic functions of
Fixed IR Network Camera.

All detailed information is described in the user's manual.



Before Install

- ⦿ Power off the Network Camera as soon as it is found smoking or smelt unusual.



Contact your distributor when such cases happen.

- ⦿ Keep the Network Camera away from the water. If the Network Camera is wet, power off immediately.



Contact your distributor when such cases happen.

- ⦿ Do not place the Network Camera around the heat sources, such as televisi



- ⦿ Refer to your user's manual for the operating temperature.



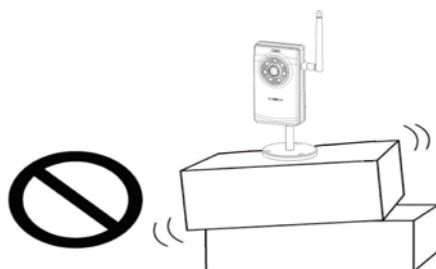
- ⦿ Keep the Network Camera away from the direct sunlight.



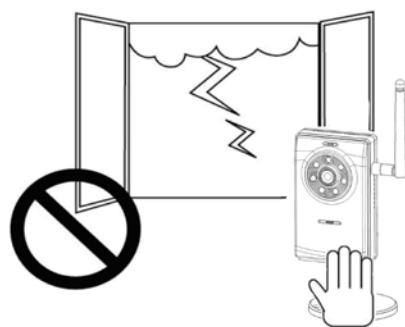
Do not place the Network Camera in high humid environments.



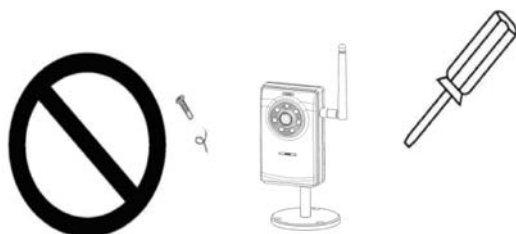
Do not place the Network Camera on unsteady surfaces.



⦿ Do not touch the Network Camera when it's lightening.



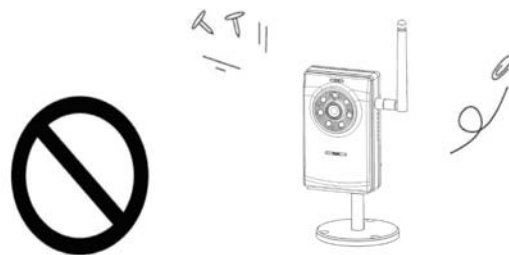
⦿ Do not disassemble the Network Camera.



- ⦿ Do not drop the Network Camera.



- ⦿ Do not insert any object into the Network Camera, such as needles.



1. Package contents

◎ The Network Camera (Wire or Wireless model)



◎ Quick Installation Guide



◎ Power adapter



◎ Camera stand



◎ Software CD

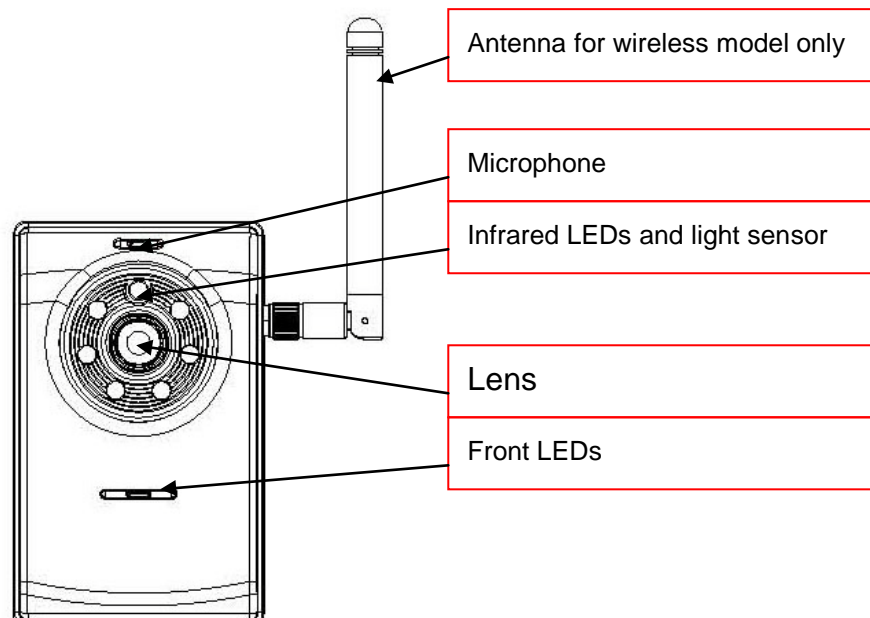


◎ Antenna for wireless model only

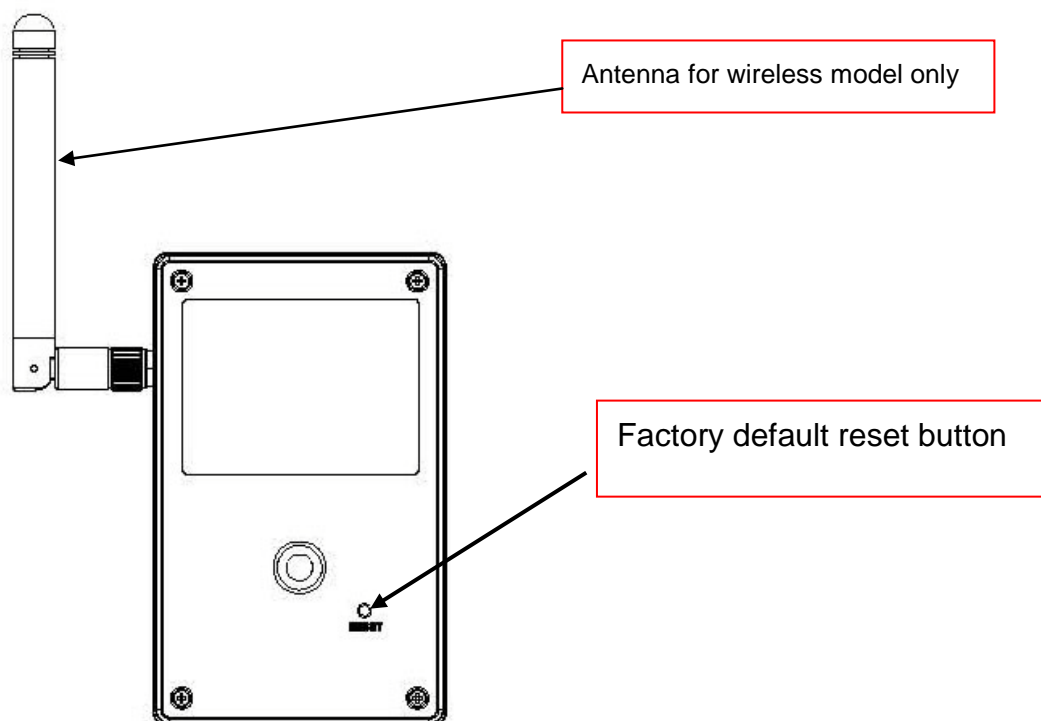


2. Hardware description

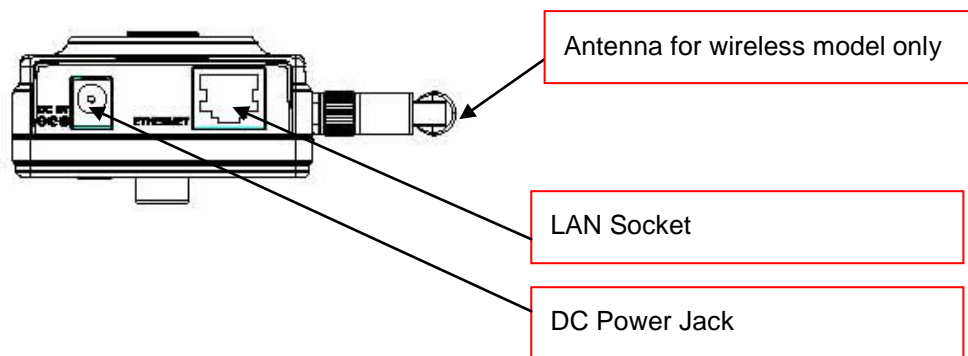
◎ Front panel



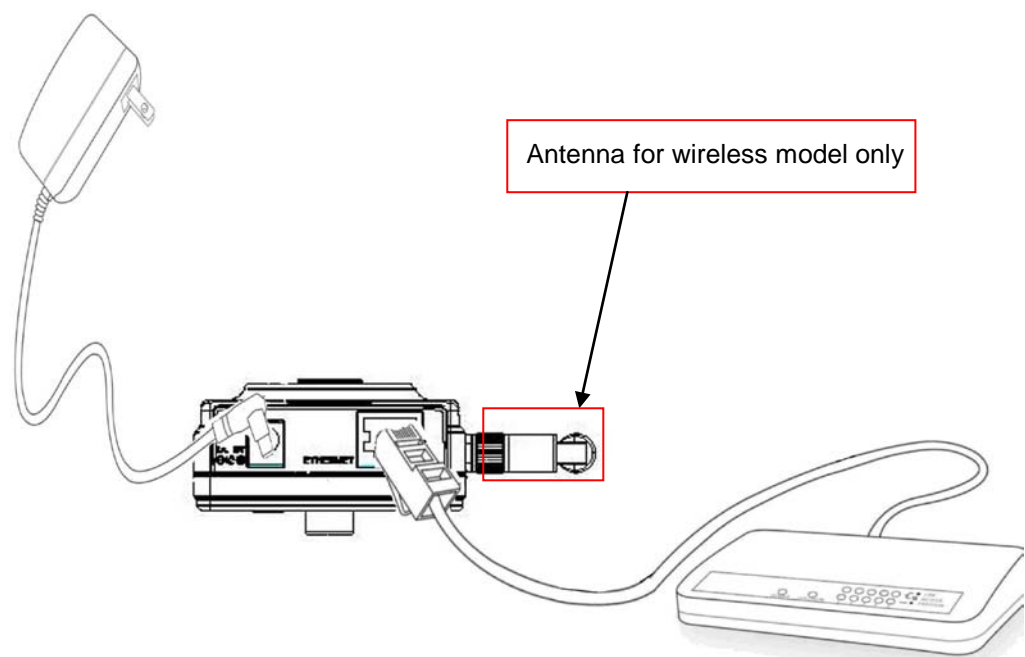
◎ Rear panel



◎ **Bottom panel**



3. Install your Network Camera in Ethernet network



1. Use Ethernet cable to make connection from Ethernet port to the hub.

* Use Category 5 Cross Cable when the Network Camera is directly connected to PC.

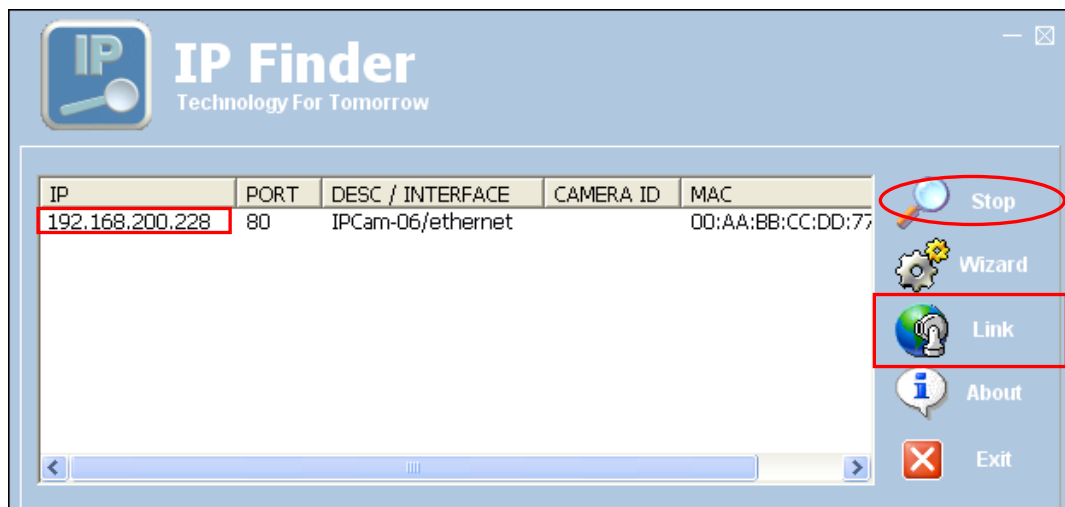
2. Finally, connect power cord to a power outlet.

4. Assign IP address

1. Run the IP Finder under the Software Utility directory from software CD.



2. The program will search the cameras on the same LAN.



3. After searching, the Network Camera will be found. Click on ip address and then click "Link" to connect the Internet Explorer to the Network Camera.

5. Connects to the Network Camera



For detail setup and further configuration, please check user's manual on the software CD.

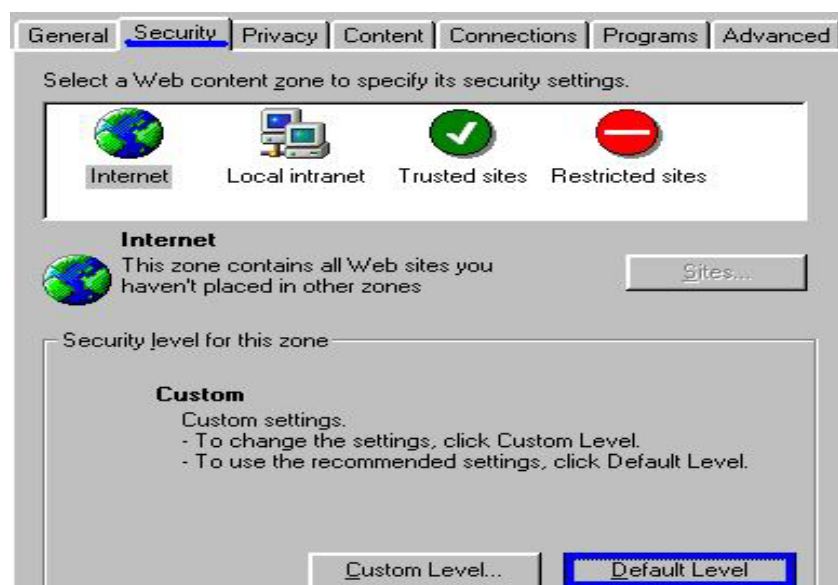
6. Client Settings (Windows 2000)

At the initial access to the “Connection type” page in Windows, the web browser will ask for a new plug-in installation, the plug-in being the Network Camera. This plug-in has been registered for certification and can be used to change the parameters at the client’s site. The user may click on to install the plug-in. If the web browser does not allow the user to complete the installation, check the Internet security to lower the security level or contact your IT or networking supervisor.

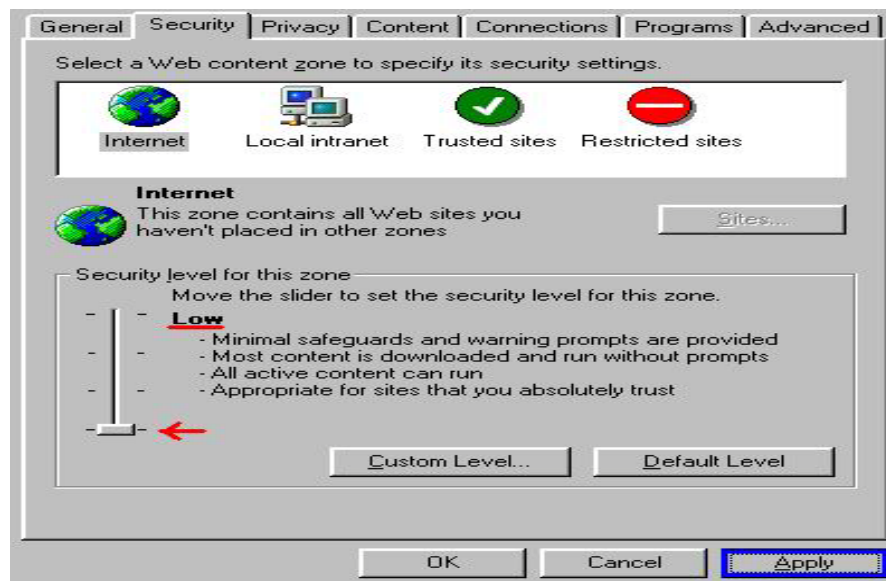
1. Initial IE browser, select function item “Tools”-> “Internet Options”



2. Security-> Default Level



3. Lower down the security level bar to “Low”, and press “Apply”

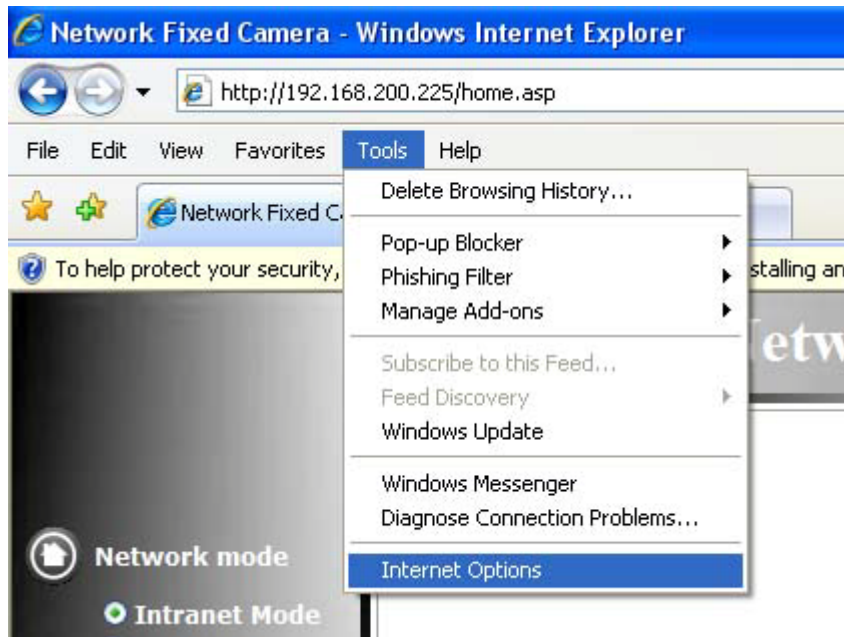


4. Refresh IE Browser, a question frame will pop-up to ask for download Active-X. press “Install”.



7. Client Settings (Windows XP)

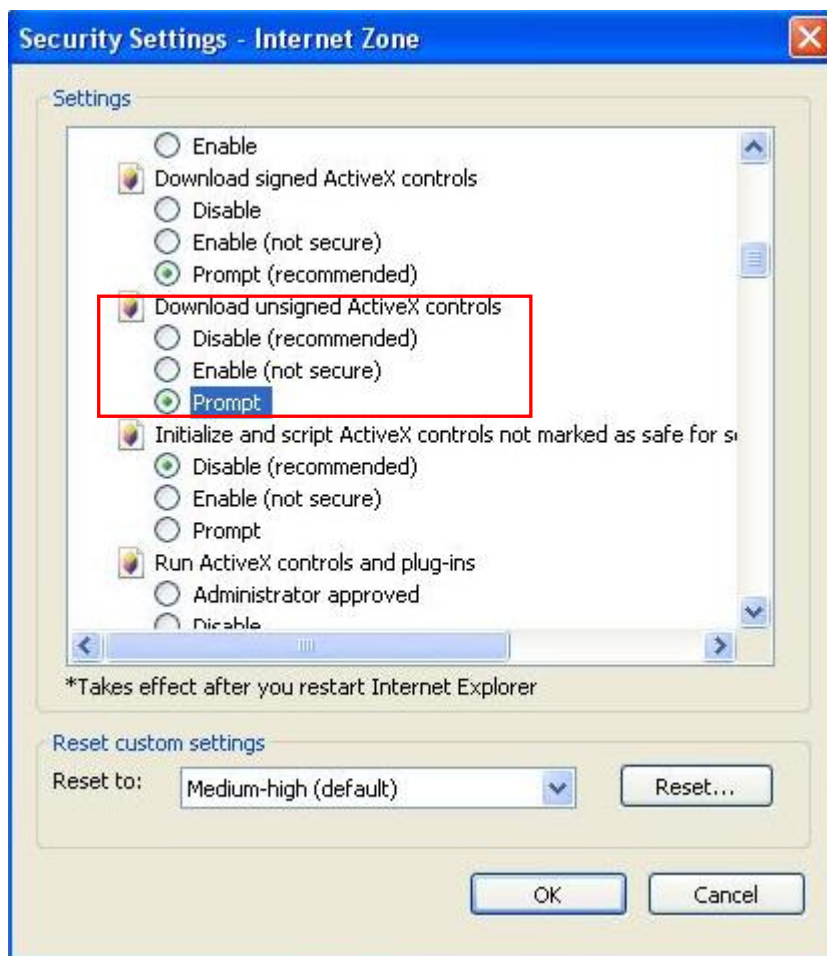
1. Initial IE browser, select function item “Tools”-> “Internet Options”



2. Security-> Custom Level



3. Check “Enable” or “Prompt” in the list of Download unsigned ActiveX controls



4. Refresh IE Browser, a question frame will pop-up to ask for download Active-X. press “Install”.

